

Company Profile



SAROV MARINE CC

General Business Information

- **SAROV MARINE CC**
- **4 Strand Street, Port Alfred, Eastern Cape, South Africa 6170**
- **Contact number : Office +27 46 624 1632 (9-12pm)**
- **: Mobile +27 83 654 2878 Kees**
- **Website : www.sarov.co.za**
- **Emails : kees@sarov.co.za**
- **ABS recognised : Customer number : 438264**

Overview

- SAROV MARINE CC is a company specialising in offshore exploration and follows the guidelines set out by IMCA.
- We are a remotely operated vehicle business and facility based in South Africa, equipped with the latest technology so to introduce you to what you could expect to use in the field of subterranean exploration.
- SAROV using high quality equipment, delivers task-based training and ROV services while ensuring all standards are met as set by recognized international bodies in the offshore and onshore oil and gas industry.
- Training is focused on industry entry and highly competent related experience, guaranteeing 60 hours of flying time as well as comprehensive maintenance and fault-finding training, and assessment on our equipment.
- Practical assessment on site
- SAROV MARINE CC is a vendor for Transnet
- SAROV MARINE CC has a full and complete SHEQ file for safety operations according to Regulations.

Company Organogram



Services

- SAROV MARINE CC offers effective solutions for subsea projects using our remotely operated vehicles (ROV), and highly qualified personnel. Our services range from subsea dive support to observation and inspection work.

Applications

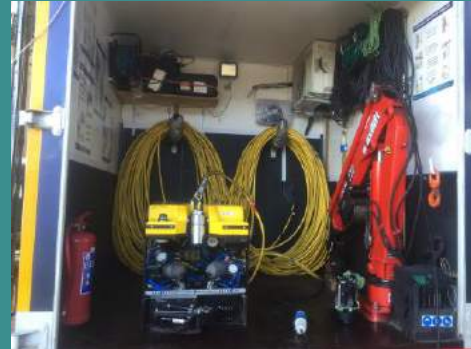
- Video surveillance
- Close visual inspection (CVI)
- General visual inspection (GVI)
- Dive support
- Survey As found As left
 - Structural
 - Sea bed
 - Debris
 - Harbour wall
 - Dam wall
 - Wrecks
 - Underwater Environmental Assessment with 3D mapping
- Inspection
 - Oil Well head
 - Platform
 - Ship hull
 - Pipeline
- Light/medium work tooling
- Offshore oilfield
- Underwater NDT
- Inland waterways
- Search and rescue
- Insurance and forensics
- Bathymetric Surveys

Crew

- SAROV MARINE CC is a dynamic team consisting of Supervisors and Pilot Technicians
- All our pilots are professionally trained according to IMCA guidelines and have very good experience

Equipment

- Mojave is the most powerful observation ROV for its size.
- Compact, ergonomic design and light weight construction allow for rapid set up and deployment using any domestic power supply.
- With world beating subCAN control and diagnostics system and proven thruster reliability, Mojave sets the standard by which the competition will be judged.
- Mojave can be supplied with a complete range of specialist tooling / sensor skids for use Offshore or Inshore Oil and Gas, Scientific, Port Security, Military, Civil Engineering and numerous other applications.
- 300m depth rating
- LED lighting as standard
- 5 x SPE-75 DC thrusters
- 80 – 260V domestic input
- Auto position option
- Excellent payload options available
- Graphic user interface (GUI) control
- 63kg horizontal 26kg vertical thrust
- Auto heading and depth
- Gemini 720i Multi beam sonar
- Hydrolek 5 function manipulator
- 1 Cam Alpha HD Camera
- Micronav USBL system
- Simple maintenance and operation means very little down time



Supporting Equipment

- Isuzu 5 ton truck with control room workshop and LARS
- Honda 10 kVA generator





WORKING PORTFOLIO

SAROV MARINE CC



YEAR 2021-2022

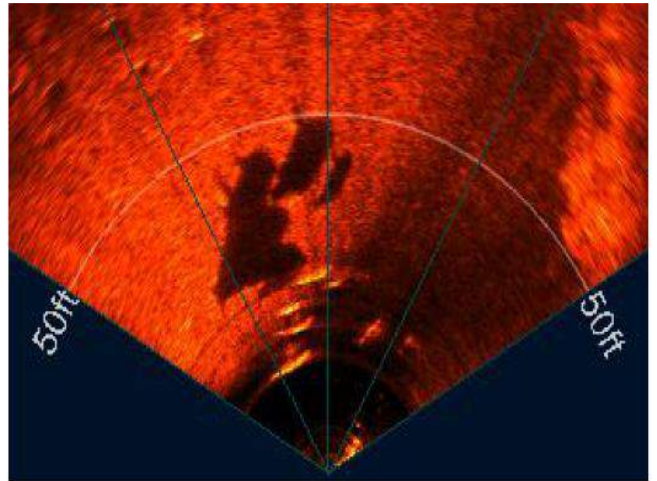
ROV Pilot Training, Port St Francis



ROV Pilot Training, Port of Coega



Hiring out of SAROV equipment



YEAR 2020

ROV Pilot Training, Port of Coega



Mineshaft Inspection, Prieska (Orion Minerals)



Year 2019

ROV Pilot Training, Port of Coega



Year 2018

ROV Pilot Training, Port of Coega



Supply of Personnel, Blue Polygon Nigeria LTD Platform/Jacket Inspections, CP Testing, Seabed Survey using Tritech Gemini 720i Multi Beam Sonar



Year 2018/2017

Supply of Personnel, GOSL / Pinnacle Offshore Services
Pipeline survey / Riser Inspection
Installed and worked with TSS440 pipe tracker,
Tritech Profilers, Mesotech MS1000 sonar,
Rig Master Manipulator, CP Probe

Effluent Pipeline Inspection, TAG Diving



Year 2018/2017 continued

Water Intake Inspection, Diesel & General



ROV Pilot Training, Saldanha Bay South Africa



Year 2016

Ship Hull Inspection, Torm Torino Vessel
Torm Vessel Management



Sea Trials Monitoring, MV Endurance Vessel
Seaway Offshore Inc



Carry out test GVI to determine visibility conditions
and cleanliness of hull
Titanium Explorer Vessel
Vantage Drilling
Port of Coega



Year 2016/2015

Sluice Gate and Dam Wall Inspection, placing of ash bags and sand bags to seal leaks
Cahora Bassa Dam, Mozambique
Alstom



Year 2015

Debris search, As found and As left survey, assisted Rigmaster to place pontoons on seabed
Norscot Oil and Gas



Year 2015/2014

Completed a survey & inspection job locating 30 lost containers which had fallen off the Maersk Seroja Lima in the Port of Ngqura, Eastern Cape, South Africa.

Equipment used was the Edgetech 4125 Dual Frequency Side Scan Sonar (Towed fish) and the Sub Atlantic Mojave ROV fitted with the Gemini 720i Multi Beam Sonar, 1Cam Alpha HD camera, Hydrolek 5-function manipulator and the Trittech Micronav USBL system

Seroja Lima Vessel

P&I Club



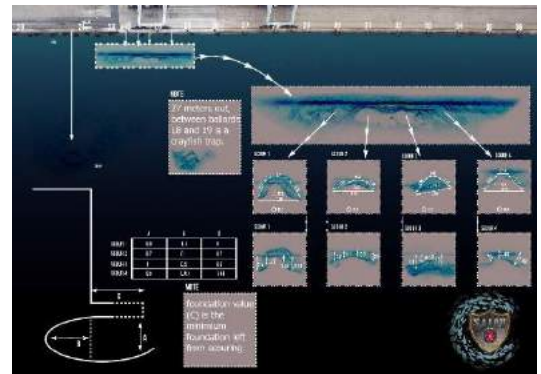
Year 2015/2014 continued

ROV Pilot Training, Mosselbay South Africa



Year 2014

Harbour wall inspection, carried out a survey for damage and scouring using the Gemini 720i Multi Beam Sonar
Transnet/Coega



Year 2014/2013

Effluent Pipeline Inspection Ethekwini Subtech Durban



Year 2013

Training in Gordon's Bay South Africa and Pro Bona Work

ROV Pilot training took place in Gordon's Bay and as part of the training, SAROV carried out pro bona work for The Department of Marine and Transport and Local Institutions



The University of Cape Town



Supply of Personnel, Blue Polygon Nigeria LTD

GVI and CVI for the lifting and shifting of the umbilical and flow line

Hydrodive Vessel

One of SAROV's first trained ROV Pilots was operating from the NDK vessel



A first for SAROV in the ROV Industry

Murray & Roberts

Kipushi Co. Mine

Mine shaft inspection of cables

SAROV explores new territory; as the company they performed a mine shaft inspection from 850 meters below the ground

