



STEALTH AVIATION



Anton 083 500 0422

anton@sarov.co.za

www.stealthaviation.co.za

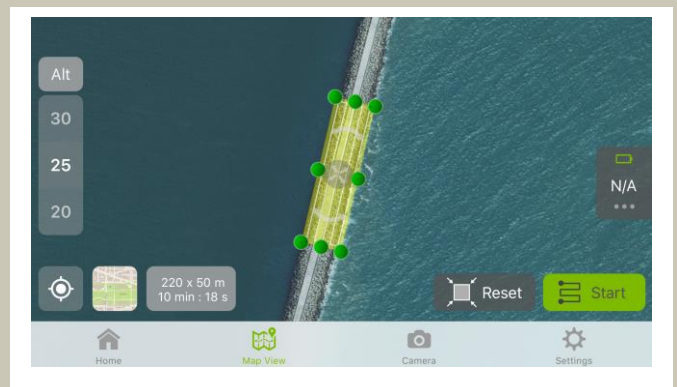


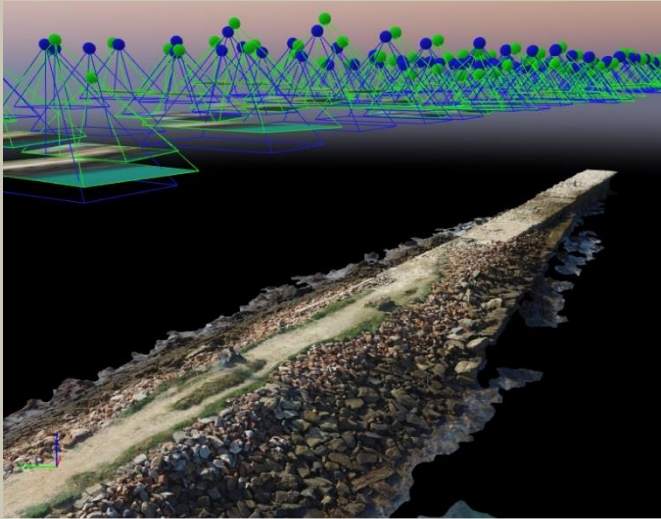
- Using the latest photogrammetry software, Pix4D, the Inspire 1 makes a powerful aerial survey platform.
- Uses are as follows:
 - Survey planning
 - Inspections
 - Topographic survey
 - Mapping
 - Disaster management

- Obtain orthomosaics and digital surface models with geo-referenced outputs and quick data acquisition
- Volume measurements Volume calculation in the 3D point cloud is intuitive, with adjustable base height and more for accurate earthwork measurements.
- BIM Integration Outputs are compatible with BIM and CAD software. Verify the as-built site status against design models using current 2D and 3D data from Pix4D

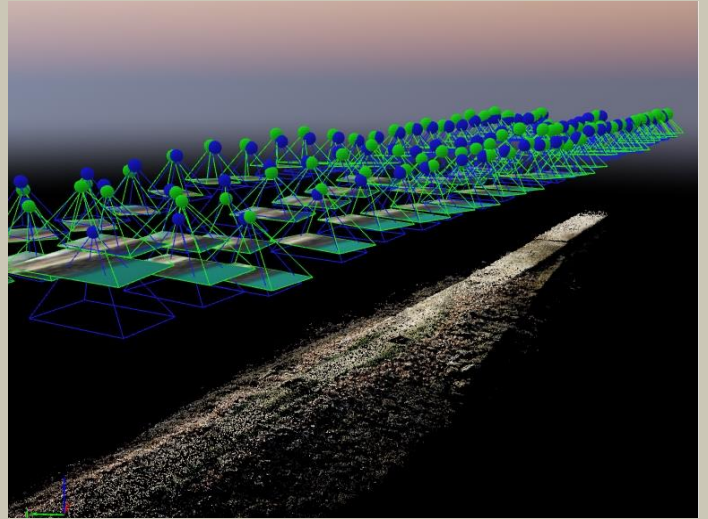
Specifications

- | | |
|----------------------|--|
| • UAV | DJI Inspire 1 |
| • Weight | 2935g |
| • Max ascent speed | 5m/s |
| • Max descent speed | 4m/s |
| • Max speed | 22m/s |
| • Controllable range | Pitch: -90° to +30° Pan: ±330° |
| • Camera | Full 360° rotation
4K video
12 megapixel photos
F/2.8 (20mm equivalent)
Anti-distortion filter |
| • Lens | |

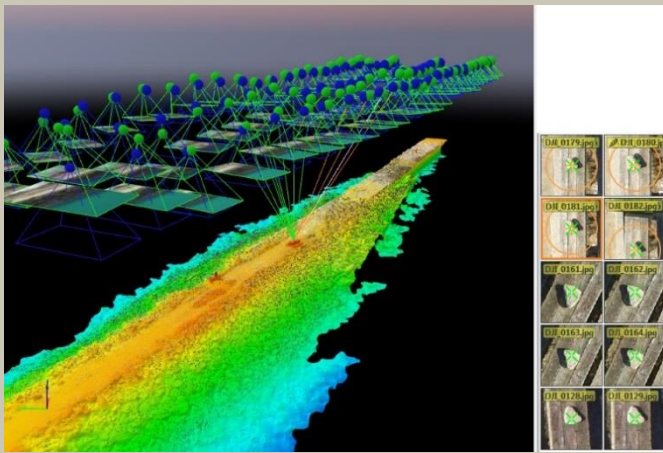




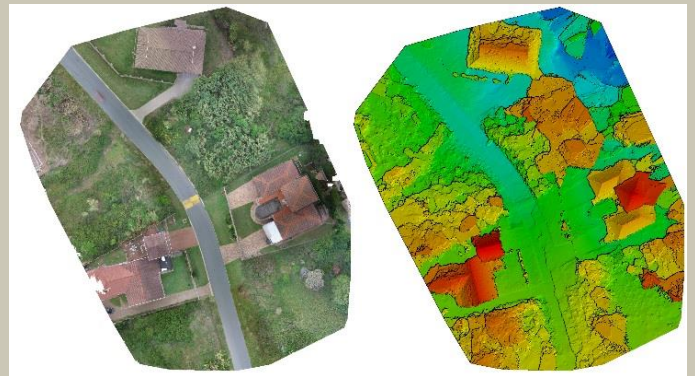
3D MESH



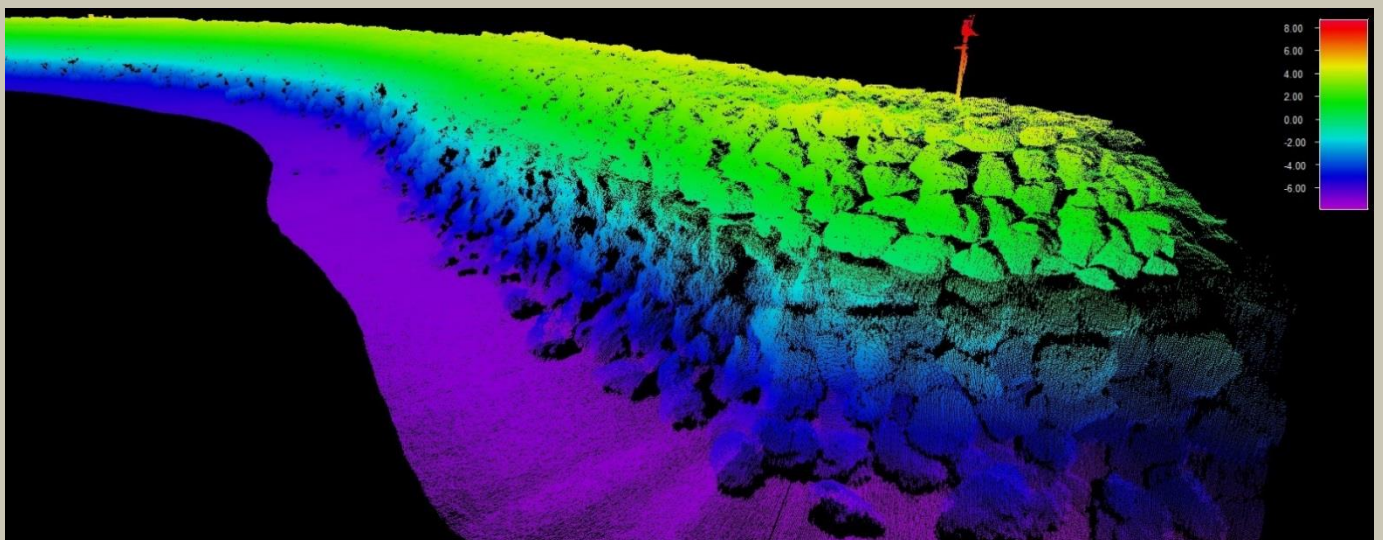
3D POINT CLOUD



3D ALTITUDE POINT CLOUD



ORTHOMOSAIC AND DSM



MARINE ASSET INTEGRITY MAPPING